

DEC 9 2021 DEC 19

This is about
the darkness
before the light.



A SONORAN DESERT CAROL

INSPIRED BY A TALE BY
CHARLES DICKENS

A Holiday Celebration of the Southwest

SEASON FIVE
THE
**SCOUNDREL
& SCAMP**
THEATRE

A PLAY FOR SCAMPS &
SCOUNDRELS
Ages 8+

The Scoundrel & Scamp Theatre at The Historic Y, 738 N 5th Avenue | (520) 448-3300 | scoundrelandscamp.org

Photography by Tim Fuller | Poster Design by Bridget Shanahan

Dreams of a New World

THE
**SCOUNDREL
& SCAMP**
THEATRE

2021-2022

SEASON FIVE



THE
SCOUNDREL
& SCAMP
presents

The Third Play of our Fifth Season

A SONORAN DESERT CAROL

written by

Claire Marie Mannle

Adaptations and Additions by China Young,
Rick Wamer and Premier Ensemble

Direction by Rick Wamer

Performance run time is 70 Minutes

**SEASON FIVE
DREAMS OF A NEW WORLD**

Sponsored by Ed and Carol Burke

Thanks to our partners,
Arts Foundation for Tucson and Southern Arizona, Act One
Community Foundation of Southern Arizona
and the Arizona Commission on the Arts.



The Scoundrel & Scamp Theatre,
738 N. 5th Ave, Suite 131, Tucson, AZ, 85705
scoundrelandscamp.org

Box Office: 520-448-3300 or boxoffice@scoundrelandscamp.org

A SONORAN DESERT CAROL

CAST

Eli Rumpet.....Gretchen Wirges
Time Being 1/Marley/Fezziwig.....Molly Lyons
Time Being 2/Roberto/Ricky.....Andy Gonzalez
Time Being 3/Martha/Present.....Gianbari Deebom
Time Being 4/Belinda/Liliana.....Felíz Torralba
Time Being 5/David/Neighbor 2.....Sean Patrick
Time being 6/Future/Bella/Neighbor 1.....Emily Fuchs
Time Being 7/Marisa/Past.....Xochitl Martinez
Young Time Being/Young Eli.....Sebastian Falcón
Young Time Being/Francis.....Willow Falcón
Young Time Beings.....Helene Krzyzanowski
Saveh Mehrabani

PRODUCTION DESIGN & DIRECTION

Direction.....Rick Wamer
Assistant DirectionChina Young
Music Direction..... Felíz Torralba
Costume Design.....Gretchen Wirges
Prop Design.....Wolfe Bowart
Lighting Design & Projection Design.....Raulie Martinez
Sound Design.....Tiffer Hill

PRODUCTION STAFF

Producer.....Bryan Rafael Falcón
Stage Manager.....Annika Maher
Assistant Stage Manager.....Zac Austin
Technical DirectorTiffer Hill
Master Electrician.....Raulie Martinez
Box Office Manager.....Betsy Labiner
Marketing Director.....Kathryn Rhea
Production Assistant.....Hunter Hnat
Musicians.....Homero Torralba, Andy Gonzalez,
and Jose Gonzalez

ARTWORK AND DESIGN

Photographer.....Tim Fuller
Poster Design.....Bridget Shanahan
Program Design.....Kathryn Rhea

SPECIAL THANKS

The Historic Y, Shawn Burke, Morty Bustos, The Rogue
Theatre, Cafe Maggie & Chander Vemulapalli.

Play Reading Series



Join us to celebrate the work of Linda Paola Varela, our Fall 2021 BIPOC Emerging Playwright Fellow!

This fall, The Scoundrel & Scamp Theatre launched a new fellowship program to support emerging playwrights and selected Linda as our inaugural Fellow for a four-month residency. For this fellowship, Linda worked closely with nationally-recognized and lauded playwright and dramaturg Elaine Romero.

On December 15th at 7:30pm, we will hear the culmination of Linda's work over the past few months: a reading of her new short play, *Crowning Glory*, directed by Matt Denney, followed by a discussion with Linda, Elaine, and the artists who performed the reading. The talk will be facilitated by Associate Producer Raulie Martinez.

This event will also be available to stream between Dec. 21st and Jan. 4th.

<https://scoundrelandscamp.org/2021-bipoc-fellow-special-event>

DIRECTOR NOTES

Theatre is a place where we must hold space for all of humanity. The beloved, the cherished, the broken, and wounded alike. Few opportunities, these past couple of years, have existed, where we are able to gather as a community and celebrate that space. After such a time as this, it is such a pleasure to be able to work with a brilliant cast and crew to bring this celebration of our community and re-entry into a collective story sharing space. Thank you, Scoundrel & Scamp Theatre, for believing in this new play by Claire Mannle and trusting us with its stewardship into being.

A Sonoran Desert Carol is a reimagining of a long and time-honored story and is based on the Dickens' seasonal favorite Holiday classic, *A Christmas Carol*. The story of a grumpy, selfish old man being affected by the spirit(s) of the season in a way that changes him for the better seems simple enough, but it is also the story of how the greed of corporatization can negatively impact the purity of humanity.

After this last year's collective experience of pause, isolation, and loss, our global society is returning to a sense of "normal" that is being challenged by the friction between "what was" and what "should be."

That friction is where the journey of both Dickens' Scrooge and our Rumpet exists. This friction has been present since the beginning of humankind. That friction is felt here and now.

Our team of creators - writers, performers, musicians, designers, etc - set out to highlight how this traditionally English story can be reimagined as one that belongs to our local Tucson/Sonoran community.

It is valuable to note that this presentation of *A Sonoran Desert Carol* is only the first invitation to explore the frictions we encounter here in the Sonoran region. We believe we can learn from and heal the traumas of our collective past by celebrating one another through intentional kindness and compassion in the present, ideally creating a future in which we can co-exist with love and respect for all, holding space for humanity (cue Tiny Tim: "God bless us, everyone!").

Please consider this show as a present offering of a future past that will lead to valuable lessons about ourselves and each other, not just as humans, but also as members of our uniquely Sonoran Desert community.

Thanks for coming!

-- Rick Wamer & China Young

DESIGN & DIRECTING



Rick Wamer (*Director*) is a physical theatre actor, choreographer and director and teaches in the Theatre Studies program at the UA School of Theatre, Film and Television. His solo performances, collaborations, and residencies have delighted and entertained audiences globally for close to four decades. He is a student of Marcel Marceau, and served as his assistant during his U.S. Seminars in Gambier, Ohio in the 1980's and '90's. He also studied with Stefan Niedzialdowski of Warsaw Polish Mime Theatre founded by Henryk Tomaszewski. Outstanding global festival appearances include the Shanghai International Arts Festival, Warsaw Mime Festival, performances at the Panphys Physical Theatre Festival in Skopje, Macedonia, for which he won "Best of Festival" honors and representing the United States in a Festival for Peace among Jewish and Palestinian Israelis in Shefa-Amr, Israel. He was a founding member of The Invisible People Mime Theatre, co-founded Theatrical Mime Theatre in Tucson with Lorie Heald, served as Artistic Director of the Saskatchewan Seminars for Mime and Movement Theatre and co-Director of the School for Mime Theatre with Lorie Heald at Kenyon College. He has filled numerous residencies at colleges and universities, is the recipient of several public and private grants and fellowships, and is referenced in several publications, among them being, *From the Greek Mimes to Marcel Marceau and Beyond*, by Annette Lust. Rick holds an M.F.A in Theatre Arts from the University of Arizona and is delighted to be Directing this production of *A Sonoran Desert Carol*, his first with *Scoundrel & Scamp*.



China Young (*Assistant Director*) has been a part of the Tucson theatre community since 2010. Her directing credits include *Consolation* with Winding Road Theater Ensemble (Director), *The Royale* with Arizona Theater Company (Assistant Director), and *HARK!* with Taproots Productions (Assistant Director). Previous work with *Scoundrel and Scamp's* include *Blood Wedding* (Ensemble/Girl 2) and last season's audio presentation of *Title IX* by Elaine Romero (Kathy/Kimberly). Other favorite productions include *Stupid F@!#ng Bird* (Mash, MAC Nominee for Best Actress-Comedy), *Cabaret* (Fraulein Kost), *August: Osage County* (Johnna), *The Migration Project* (Chorus), *Les Miserables* (Ensemble), *Sweeney Todd* (Ensemble) and *HEAD! The Musical* (Doris/Ensemble). She holds a BFA in Acting from Texas Tech University, an MFA in Contemporary Performance from Naropa University, and serves as Managing Director for Winding Road Theater Ensemble. She is immensely grateful to have been a part of the *Sonoran Desert Carol* production process, and looks forward to participating in S&S's upcoming production of *Citizen: An American Lyric*.

DESIGN & DIRECTING (cont.)

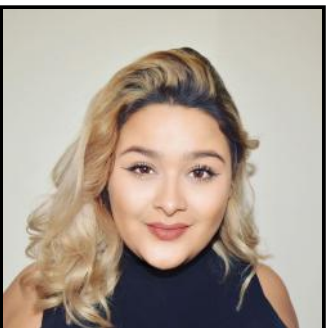


Raulie Martinez (*Lighting Design/Projection Design*)

Raulie is excited to be returning to The Scoundrel & Scamp for their fourth season. He studied theatre production & lighting design for four years at the University of Arizona. Past designs have included Cloud Soup; This Girl Laughs, This Girl Cries, This Girl Does Nothing; and Lovers: Part One at The Scoundrel & Scamp Theatre; Die Fleidermaus and The Magic Flute with The UA Opera Theatre; The Wizard of Oz and Peter Pan with CYT Tucson; and Oklahoma! as well as Boieng Boeing with Arizona Repertory Theatre.



Tiffer Hill (*Sound Design/Technical Director*) has been the Resident Stage Manager with Scoundrel & Scamp since its first production, when the theatre was a construction site during the day and a rehearsal space at night. He began working in theater as a stagehand at the Gaslight Theatre in 2012 and continued working there for the next five and a half years. Tiffer also engineers the weekly podcast You Had Me At Hell No hosted by his best friends Ally and Mel. He would like to thank his fiancée Gabriella for her endless love and support.



Felíz Torralba (*Music Director/ Time Being 5/Belinda/Liliana*) returns to the Scoundrel & Scamp for their 5th season after most recently working as Music Director for A Little Prince and Assistant Director for Every Brilliant Thing. Favorite acting roles include Albienne in This Girl Laughs, This Girl Cries, This Girl Does Nothing & Ana in Real Women Have Curves. Torralba's passion for all aspects of theatre reflects in her work with various local companies as an actor, director, choreographer, and music director. Most days, Felíz spends her time training her private vocal clients, developing performer wellness products (vozfeliz.com), co-operating Taming of the Review (tamingofthereview.com), and managing various social media accounts for local businesses. Acknowledgements include Andy Gonzalez, Holly Griffith, and Marissa Garcia. A special thanks to her family for showering her with love and wisdom.

DESIGN AND DIRECTING



Wolfe Bowart (*Props Design*) Physical theatre playwright and performer Wolfe Bowart is devoted to creating and presenting theatre productions that engage cross-generational audiences in theatrical experiences that evoke thought, wonder, and laughter. Under the banner of his company SpoonTree Productions, Bowart performs and tours internationally his original works *The Shneedles*, *LaLaLuna*, *Letter's End* and *The Man the Sea Saw*. The company is a two-time Australian Helpmann Award nominee – in 2010, *Letter's End* was nominated in the category of Best Touring Production following a national Australian tour encompassing 70 venues, and in 2012 *The Man the Sea Saw* was nominated in the category of Best Visual/ Physical Theatre Production. Bowart's productions have been seen in 20 countries worldwide. Highlights include seasons of *LaLaLuna* and *Letter's End* at the London International Mime Festival, the leading festival for contemporary visual theater, and a national tour of France.



Marc David Pinate (*Community Consultant*) is an indigenous Xicano making theatre in his ancestral homelands of the Sonoran desert. The producing artistic director of Borderlands Theater, his passion for creative placemaking has led to award-winning, interdisciplinary projects focused on Southern Arizona narratives (*Más*, *Sanctuary*, *Barrio Stories*, *Sonoran Shadows*). These projects are anchored in collaborations with an array of institutional partners, artists, and communities incorporating digital media along with popular and traditional theatre forms. His groundbreaking work has received support from the National Endowment for the Arts, Doris Duke Foundation, National New Play Network, UA Confluence Center for Creative Inquiry, and Theatre Communications Group. He is currently developing *Antigone at the Border*, a post-colonial adaptation of the Greek classic for which he received the New England Foundation for the Arts National Touring Project award to develop. Marc holds an MFA from the Theatre School at DePaul University and teaches theater at Pima Community College and the University of Arizona.



Bryan Rafael Falcón (*Producer*) Bryan is an award-winning director (MFA Directing, Western Illinois, 2001) and tech entrepreneur with a passion for both education and building and scaling successful organizations. At the S&S, Bryan has directed *Cloud Tectonics*, *Blood Wedding*, *My Life in Sports*, *Two Plays for Lost Souls: The Love Talker & The Yellow Wallpaper*, *Oscar Wilde's Salomé*, *There is a Happiness That Morning Is* (Best Play, 2018 Arizona Daily Star Mac Award) and *A Public Reading of an Unproduced Screenplay About the Death of Walt Disney*, for which he won the 2017 Arizona Daily Star Mac Award for Best Director. Bryan served as Artistic Director for two Indiana-based theatre companies, *New World Arts* and the *Backporch Theatre Company*. He served as a director and set designer for numerous shows, including *The Carthaginians*, *Lysistrata*, *Cloud Tectonics*, *Night Mother*, *Bug*, *Marisol*, *Love Letters*, *Comedy of Errors*, *Twelfth Night*, *The Taming of the Shrew*, and *Romeo and Juliet*. In Tucson, Bryan has directed at *The Rogue Theatre*, including *The New Electric Ballroom* and *Awake and Sing*. He was recognized as Best Director (2012 Arizona Daily Star Mac Award) for the show *The Night Heron*. Bryan serves as board president of the Tucson-based *Southwest Folklife Alliance*.



Annika Maher (*Stage Manager*) Annika received her BFA in Theatre Production/Design with an emphasis in Stage Management from the University of Arizona in 2020. Some of her previous stage management credits include: *The Two Gentlemen of Verona* (SM), *The Last Night of Ballyhoo* (SM), *Sinkers: An Original Work of Physical Theatre* (SM), *The Addams Family* (ASM), and *Sister Act* (ASM). Annika would like to thank everyone at *Scoundrel & Scamp* for being so amazing to work with. Lastly, she wants to thank her parents, family, friends, and Zac for their constant love and support.



Zachary Austin (*Assistant Stage Manager*) is very excited to be working on this production this holiday season. He is a graduate of the University of Arizona's BFA program and some of his past credits include: *Twelfth Night*, *Tecumseh!*, *Two Gentlemen of Verona*, *Pippin* and *The Pajama Game*. Zachary would like to thank his family for all their support over the years and Annika for her unending love.

THE CAST



Gretchen Wirges (*Eli Rumpet/Costume Design*) is beyond thrilled to be working on her sixth production with Scoundrel & Scamp. She has been featured as an actor, director, playwright and costumer on many of the stages throughout the Tucson community. As an actor, she is especially proud of her performances in S&S productions: *THE LITTLE PRINCE*, *THE LIGHT PRINCESS* and *IT IS MAGIC*. A lifelong love of sewing combined with an eternal passion for theatre brought Gretchen to costuming in recent years. As a costumer, Gretchen has been fortunate to work on the amazing family shows at Live Theatre Workshop, and is so excited about this opportunity to design and create costume for S&S. It has been a joy for her to have had a hand in the incredible creative experience of building *A SONORAN DESERT CAROL* both behind the scenes and on stage. Gretchen would like to dedicate every "Bah Humbug" uttered to her late father, who loved every black and white Christmas movie and gave her so many years of holiday magic.



Molly Lyons (*Time Being 1/Marley/Fezziwig*) is an actor, director, and teacher who has worked across the US, Canada & Europe. Recently transplanted from Chicago, she is thrilled to make Tucson her home. Molly recently appeared in Scoundrel & Scamp's virtual presentation of Elaine Romero's *TITLE IX*. Some of her favorite roles include: Ana – *THE STANDBY LEAR*, Hillary Clinton – *CONSOLATION*, Ellie – *SWEET TEXAS RECKONING*, Cabdriver – *HELLCAB*, Quickly & Worcester – *FATHER RUFFIAN*, Paola – *CHEWING ON BECKETT*, Nurse – *ROMEO & JULIET*, Beatrice – *MUCH ADO ABOUT NOTHING*, Titania – *A MIDSUMMER NIGHT'S DREAM*, Cecilia – *AT WATER'S EDGE*. Molly has toured North America and Europe playing the last queen of Ireland in her original solo show, *A MOST NOTORIOUS WOMAN*.

Molly has directed such productions as: *A LIFE IN THE THEATRE*, *THE TIME IS OUT OF JOINT*, *ANGELS FALL*, *ON THE VERGE*, *TWELFTH NIGHT*, *JULIUS CAESAR*, *BARBER OF SEVILLE*, *MAGIC FLUTE*, *CARMEN*, *THE FOREIGNER*, *DIARY OF ANNE FRANK*, *THE CLEARING*, and an award-winning *GLASS MENAGERIE*.

Molly's education includes: Santa Clara University, California Institute of the Arts, & The Royal Shakespeare Company. Molly has been Artistic Director of Green Acting Wood Studios since 1994.



Andy Gonzalez (*Time Being 2/Roberto/Ricky*) is more than excited to share his S&S debut with you this holiday season! No stranger to the stage, Andy began performing at a young age in Karate Demonstrations and Competitions. While studying Theatre Arts at the University of Arizona he was able to become a certified Stage Combatant, combining his two worlds. Andy has worked for several Theatre Companies including Borderlands Theater - here in Tucson - as both an Actor and Producer. Past shows include Virginia Grise's *Blu* and *Their Dogs Came With Them*, Chekhov's *The Proposal*, Hillary Bettis' *The Ghosts of Lote Bravo*, *Barrios Stories* and of course *A Tucson Pastorela*. Andy would like to thank Feliz Torralba, Homero Torralba, Jose Gonzalez and his parents for their continued support.



Gianbari Deebom (*Time Being 3/Martha/Present*) is an entertainer and artist in Tucson, AZ. Graduate from PCC and current film student; this is her first show with *Scoundrel and Scamp* and she can't wait for more! Gianbari has worked professionally at many theaters around Tucson including Live Theater Workshop, *The Rouge*, *Invisible Theater*, and more. Some of her favorite credits include *Baskerville: A Sherlock Holmes Mystery* (Mr. and Miss Stapleton), *Mamma Mia!* (Rosie), *Moby Dick* (Dagoo), *Valerie: A Cosplay Monologue* (Valerie), and *Aristophanes v. Euripides: Dawn of Poetic Justice* (Myrrhine), and *Sweeney Todd* (Beggar Woman). You can see her next in *Scoundrel and Scamp Theatre's Citizen*. Enjoy the Show!



Sean Patrick (*Time Being 6/David/Neighbor 2*) is a Tucson-based artist drawing on an eclectic background in devised theatre, vocal performance, non-profit work, multilingual education, and all-around observer of life, the universe, and everything. Obtaining degrees in Theatre and French in 2011, Sean has since taught nationally and abroad. As a director with local devised theatre projects, he has had the fortune to create art and stories alongside many of Tucson's varied and vibrant communities of all languages, histories, and artistic backgrounds. Credits include projects at the *Rogue Theatre*, *Winding Road*, *Old Tucson*, *Reveille*, and he feels so fortunate to be returning to the *Scoundrel & Scamp*.



Emily Fuchs (*Time being 7/Future/Bella/Neighbor 1*) (she/they) is excited and grateful to return to the The Scoundrel & Scamp stage! Born and raised in Tucson, Emily's recent credits include Terra in The Scoundrel & Scamp's production of Frozen Fluid, and Honey in Things Theatrical's Who's Afraid of Virginia Woolf?. Additional credits include Masha in Three Sisters and Dr. Seward in Dracula, as well as an ensemble member in Blood Wedding with The Scoundrel & Scamp and Love and Information with the Tucson Fringe Festival. Emily received their Associate of Fine Arts in Theatre Performance from Pima Community College in 2017 and a Bachelor of Arts in Theatre Studies from The University of Arizona in 2019, with training in both classical and modern works and techniques, as well as focusing on generative devising and production dramaturgy. Her previous and current work can be found on Instagram at @emilylfuchs and on <https://emilylouisefuchs.wixsite.com/mysite>. In their spare time, Emily enjoys photography, relaxing with her clowder of rescue cats, and a good Segway tour.

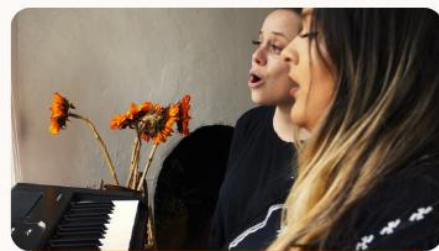


Xochitl Martinez (*Time Being 8/Marisa/Past*) is excited to join the Scoundrel and Scamp for this beautiful holiday show! Previously, Xochitl was seen in the S&S's production of Blood Wedding as Young Girl. She has performed with various companies in Tucson, including Live Theatre Workshop and Arizona Theatre Company. She is currently a senior at University High School and hopes to continue pursuing her passion for theater.



Feliz Torralba

PRIVATE VOCAL COACHING



CONTACT

520.437.3499

INFO@VOZFELIZ.COM

@VOZFELIZ f



SPECIALTIES

CONTEMPORARY

MUSICAL THEATRE

POP



- ⚙ Online + In-Person Training
- ⚙ Personalized Lesson Plans
- ⚙ Starting at \$35 per session
- ⚙ In-Depth Music Analysis, Performance, & Audition Tips





Willow Falcón (*Young Time Being/Francis*) is a veteran of Scamp acting classes. This is her 3rd production at the S&S (Salome and Herman). She is a student at Tucson High School. Willow wants to thank her family for all the love, support, and opportunities they have given her and wants them to know that she loves them.



Sebastian Falcón (*Young Time Being/Young Eli*) has been a member of the S&S Scamp company since the company's inception 5 years ago. Two years ago he was seen on stage at the S&S in Herman. While not on stage, and sometimes on it, Sebastian is a major geek knowing how to play seven RPG's (Role Playing Games) is on a Star Wars podcast, and is a Warhammer 40K novice.



Saveh Mehrabani (*Young Time Being*) joins Scoundrel and Scamp for her second major production with the theater. Before playing Little Goblin and Townsperson in 2020's Herschel and the Hanukkah Goblins, she was in youth classes at Scoundrel and Scamp and performed in Foodopolis. From age 5 to 8, Saveh spent summers in Cypress, Texas in theater camps at Stageworks Theater and Playhouse 1960. She also enjoys gymnastics, volleyball, writing stories, plays, songs, and making movies with her sister and friends. Saveh is grateful to be working with such talented actors, directors, and crew members.



Helene Krzyzanowski (*Young Time Being*) is honored to make her acting debut in Scoundrel and Scamp's Sonoran Desert Carol. Currently, she works full time as a 7th grader. When she's not in school, she enjoys singing, playing music, painting, drawing, dancing, sculpting, exploring nature, and spending time with her family and friends. She is grateful to her Mom and Dad and to all the wonderful people working on this production for all their support!

MUSIC DIRECTOR NOTES

As soon as I heard the name of this play, I knew the exact sound I wanted...

Sounds of the Sonoran desert are warm and familiar to me. Being a born and raised musician in Tucson, Arizona, I was brought up around the sounds of the Sonoran Desert region. This was what initially drew me to say yes to this project and kept me motivated and passionate throughout the process. Improvisation was essential to the organic flow of the score you'll hear in today's refined version. You may notice that I am also one of the actors in this play. Jumping from being on stage to playing the piano was perhaps the most integral part of my writing process. Writing in the moment with the actors was necessary to create a score that effortlessly weaves into the groundwork set by the cast. My goal as Music Director was to elevate what the actors have already brought to the table and I found myself answering questions like; How can I support their choices? How can I help move the story along and keep the authenticity of each scene?

Characters such as Rumpet, Marley, The Time Beings, Past, Present, Future, and the Romero Family each have their own musical themes. These themes are what drive the story along. Once I knew the sound I wanted, I felt an impulse to add some warmth by using the guitar. Our talented group of guitarists: Homero Torralba, Andy Gonzalez, and Jose Gonzalez were absolutely essential in capturing the warmth and familiarity that this story emulates. Their talents, ideas, and ability to collaborate during rehearsals gave the soundscape that I had written to a level of intimacy and refinement that never could have been achieved alone. A million thank yous is deserved for their incredible work. I could go on and on, but I think it's best that you sit back and let the music do the talking. Thank you and enjoy the show!"

-Felíz Torralba

OUR DONORS

Gifts of \$10,000 or More

Arts Foundation for Tucson & Southern Arizona	Ed and Carol Burke
	Shawn Burke
David & Norma Lewis Foundation	Bryan and Elizabeth Falcón
Buffalo Exchange	Clay Shirk

Gifts of \$1,000 - \$9,999

Actor's Equity Foundatiion
Allen Angell & Cindy Lindhorn
American Literary Translator's Association
Linda & Bob Berzok
Norma Davenport
William Dell
Rafael & Christine Falcón
Chris Graff
Thomas & Emmeline Hill
Ann Hostetler & Mervin Smucker
Lynn Hourani
Kristi Lewis
Doug Liechty Caskey
Tyler Meier
Bill Sandel & Karen DeLay
Leslie Powell & Ron Pullins
JoAnn & Alan Tongret

THANK YOU!

OUR DONORS

Gifts \$100 to \$999

Jean Aboud
AKA Theatre
Howard Allen
Maribel Alvarez
Anonymous
Susan Arnold
Bill Autry
Paul Barby
Monica Bauer
Les & Trina Baxter
Philip Bennet
Robert Berzok
Sophia Bowart
David Bygot & Jeanette Hanby
Maria & Tony Caprile
Winston Carter
Kimi Eisele
Eleanor Francis
Dave Frey
Amy Frost
Charles Goldsmith
Anne Griffith
Karl Haas
Pat Hemann
Peggy Hitchcock
Laura Hostetler & Mark Liechty
Lynn Hourani
Mary & Peter Hoyt
Yvonne Huckleberry
Teresa Huidobro
Jennifer Hutchison
John Keeney
Jbid & Kris Kissel
Mark Klugheit
Kim Koistinen
Robyn Kool
David & Jan Labiner
Brian Lockhart
Vicky Loebel

Jeff & Renee Mack
Matt Marcus
Elizabeth Mays
Cynthia Meier & Tom Wentzel
Michael Mills
Victoria Mills
Cathy Mullan
Mireille Nashimoto
Carol Osborne
Chuck & Susan Ott
Barbara Richardson
Andre Rosalik & Gloria Kryz
Carol Rose
Alan Rudy-Froese
Betsy Sandlin
Ken & Melissa Schachter
Sue Schildt
Alessia Helen Smith
Joyce Smith
Jon Smucker
Kay Spencer
Stephanie Stark-Mehrabani
Ruth Ann Stauffer
Tracy Stillwell
Ted Swartz
Homero Torralba
Cindy Traylor
Judith Triestman
Clare & Jeffrey Turner
Javier Varela
Bella Vivante
Dennis & Margaret Walley
Matt Walley
Frances Wheeler-Berta
Matt B. Williams
Matthew Foote Williams
Beth & Marcos Wright-Kuhns
ZUZI!

J

OUR DONORS

Gifts \$5 to \$99

Charlotte Adams
Autumn Alexander
Kathy Allen
John Amoroso
Cheri Anderson
Lisa Archer
Jerry Asher
Patty Atkins
Julie Baber
Christine Baines
Jessica Baldanzi
Julia Balestracci
Lily Banirah
Sabrina Barger
Joseph Barnett
Sharon Barr
Yoshimi Barron
Diana Bauer
Janet Bayliss
Boelyn Baylor
Lena Berger
Nancy Berheim
Frances Berta
Linda Biederman
Christopher Bilinski
Denice Blake
Stephano Bloch
Steve Blomquist
Stefano Bloch
Bryn Booth
Naima Boushaki
Elivia Bow
Sterling Boyns
Mary-Pat Branch
Ben Branch
Kate Breakey
Brian Stark & Lydia Bruenig
Powell Brumm
Charles Buchanan
Charlene Buck
Hope Busto-Keyes
Kevin Byrne
Daniel Calleja
Victoria Carney
Susan Carr
Aaron Dean Chacon
Daniel Chavez
Sheila Christmon
Gregory Colburn
Rebecca Cordier
Valerie Coreas
Matt & Sarah Cotten
Mitzi Cowell
Jay Cravath
Cecily Crebbs
Nancy Cronin
Eleanor Crosfield
Kia Crotinger
Sean Daniels
Kendra Davey
Lynn Davis
Jacqueline Day
Gabiella De Brequet
Mabel Dean

Leeaat Dehnert
Douglas Delashmit
Glenda Demoss
Brent Denkinger
Martin Diamond
Mark Dickinson
Ruth Dickstein
Kira Dixon
Traci Donnelly
Christopher Duarte
Kelly Durham
Frossie Economou
Kassandra Efid
Ryan Eggleston
Mary Carlisle Ellis
Jon Emm
Carolina Erie
Robert Eschrich
Vicki Ettleman
Cara Falcón
Karen Falkenstrom
Kathy Farias
Daivd Farneth
Michael Fenlason
Franchesca Fierro
Laurie Floyd
Sidney & Vincent Flynn
Erica Franco
Deborah Freeman
Stephanie French
Elodie Frey
Tim Fuller
Glenn Furnier
Adrienne Gamba
Sally Gershon
Duffy Gilman
Krystal Googins
David Gorin
Eileen Graziano
Holly Griffith
Edmund Griffth
Glenn & Mary Guidroz
Kelly Gulat
Lauren Gunderson
Si Gustafson-Zook
Alejandro Guzman
Serafina Guzman
Clare Hagyard
Rebecca Hamilton
Claire Hancock
Hurst Hannum
Sarah Happel
Karen Harber
Anthony Hartman
Lorie Heald
Sedona Heidinger
Terry Hempleman
Jonathan Henry
Franca Hernandez
Diane Hertzler
Carrie Hill
Michael Hoff
Barbara Honn

Victoria Horne
Adam Hostetter & Jim Wilson
Keith Hughes
Sariya Jarasviroj Brown
Emily Jeanes
Benjamin Jens
Katalina Jimenez
Mark Jones
Robert Jungers
Keith Kanzler
Julie Karra
Dan Kasper
To-Ree-Nee Keiser
Phillip Keller
John Kelley
Chris Kelly
Harris Kendall
Kathleen Kennedy
Rita Kester
Adam Klein
Ryan Parker Knox
Fran Krackow
Brandon Kral
Jane Kroesen
Rob Kulakofsky
Yonatan Kurland
Ronni Lacroute
Stanford Lamerg
Cody Landstom
Ryan Lang
Hannah Launius
Arlene Leaf
Lauren Lebeau
Adam Ledford
Terri Leichty
April Levy
Kelli Lycke
Janelle Macdonald
Michael Malkin
Claire Marie Mannelle
Raulie Martinez
Camile Martins-Bekat
Kathleen Matsinger
Tesa Mayorga
Steve McKee
Paul Mercer
Manuel Merino
Robert Meyer-Lee
Susan Miller
Michele Miller
Michelle Milne
Cynthia Montano Morris
David Morden
Bijan Mossadenghi
Leigh Moyer
Deborah Moynihan
Scott Munson
Alexander Murphy
Jacqueline Murphy
Lucy Nelson
Jill Newby

Gifts \$5 to \$99

CMegan Nickerson
Ashley O'Dell
Stephan Ott
Grace Otto
Roger Owen
Thaddeus Pace
Dylan Page
Michelle Panousopoulous
Francesca Pardes
Robert Parks
Jessica Parra-Furfaro
Christopher Peak
Kristi Pearson
Peg Peterson
Karen Phelps
Frank Plucker
Devin Polster
Stephen Pompea
Shari Popen
Amanda Powell
Senju Rajan
Lynn Ratener
W. Eric Rau
Douglas Rautenkranz
Wildwind Realty
Michelle Renzetti
Valentina Restrepo
Hugo Reyna
David Ricci
Barry Rich
Ben Rich
William N. Rich Jr.
Nanette Robinson
William Robison
Cindy Rodriguez
India Rowe
Karyn Rudnick
Lucille Russell
William Sadler
Rosaleen Salonikios
Araceli Sanchez
Lindianne Sarno
Joan Saunders
Shya Scanlon
Marcel Schaap
Chris Scott
Juan Manuel Sepulveda
David Shack
Teresa Shade
Derek Shemley
Wendy Shepherd
Barbara Sherman
Diane Shew
Barbara Siegel
Stephanie Sikes
Len Silver
Ari Slater
Sandra Slater
Charles Slaughter
Diana Slickman
Julia Smucker
Katharine Sobotka

Athena Solan
Susan Spurlock
Cynthia Ann Squillance
Brian Stark & Lydia Bruenig
Leon Steinberg
Marcia Stoker
Michael Stone
Kerrie Stramier
George Subiti
Lori Surina
Bayla & David Sussman
Mary Swanson
Susan Tarver-Wahlquist
Halsy Taylor
Leah Taylor
Emily Thomas
William E. Thompson
Daniel Thrall
Susan Tiss
TC Tolbert
Brett Tolley
Bradford Trojan
Marie Trump
Cynthia Tuell
Denise Uyehara
William Vail
Elizabeth Vaisben
Eric Van Meter
Linda Varela
Sam Varner
Antonio Vasquez
Heather Walker
Liz Wall
Shannon Wallace
Richard Wamer
Alison Warner
Marjorie Waters
Dylan Welker
Deanna White
April Wiley
Nicole Williams
Jordan Wilson
Paul Winick & Ronda Lustman
Dana Winter
Candy Wirges
Sally Withers
Lisa Wood
Stephanie Wortman
Chris Wozney
Natalie Wright
Joshua Wysocki
Kelly Yablonski
Susan Yager
Willam Yates
China Young
Howard Zogott
Amy Zuckerman

OUR DONORS

DEATH OF A SALESMAN

by **Arthur Miller**

**Attention
must be paid.**

January 6–23, 2022

THE
**SCOUNDREL
& SCAMP**
THEATRE

The Scoundrel & Scamp Theatre is home to two state-of-the-art performance spaces— a 30-seat studio and a 100-seat proscenium-style stage. With an annual season comprising classics, modern plays, and world-class original works, the S&S invites audiences to come together to experience theatrical work that challenges, invigorates, generates questions and conversations, and occasionally inspires tears and laughter.

OUR MISSION

The Scoundrel & Scamp Theatre creates immersive & imaginative experiences crafted for a diverse cross-generational audience. Our collaborative environment facilitates inquiry and inclusivity with the goal to inspire empathy and encourage discourse. The Scoundrel & Scamp Theatre celebrates the illuminative power of the theatre arts to help us dream, question, and forge connections with one another.

BOARD OF DIRECTORS

Shawn Burke
Elizabeth Falcón
Bryan Rafael Falcón
Tyler Meier
Kerryn Negus
Clay Shirk

STAFF

Bryan Rafael Falcón, Artistic & Managing Director
Tiffer Hill, Technical Director
Betsy Labiner, Director of Education & Development Administrator/Box Office Manager
Kathryn Rhea, Director of Marketing & Outreach/House Manager
Raulie Martinez, Associate Producer/Resident Lighting Designer
Leigh Moyer, Resident House Manager
Hunter Hnat, Resident Teaching Artist & Project Admin

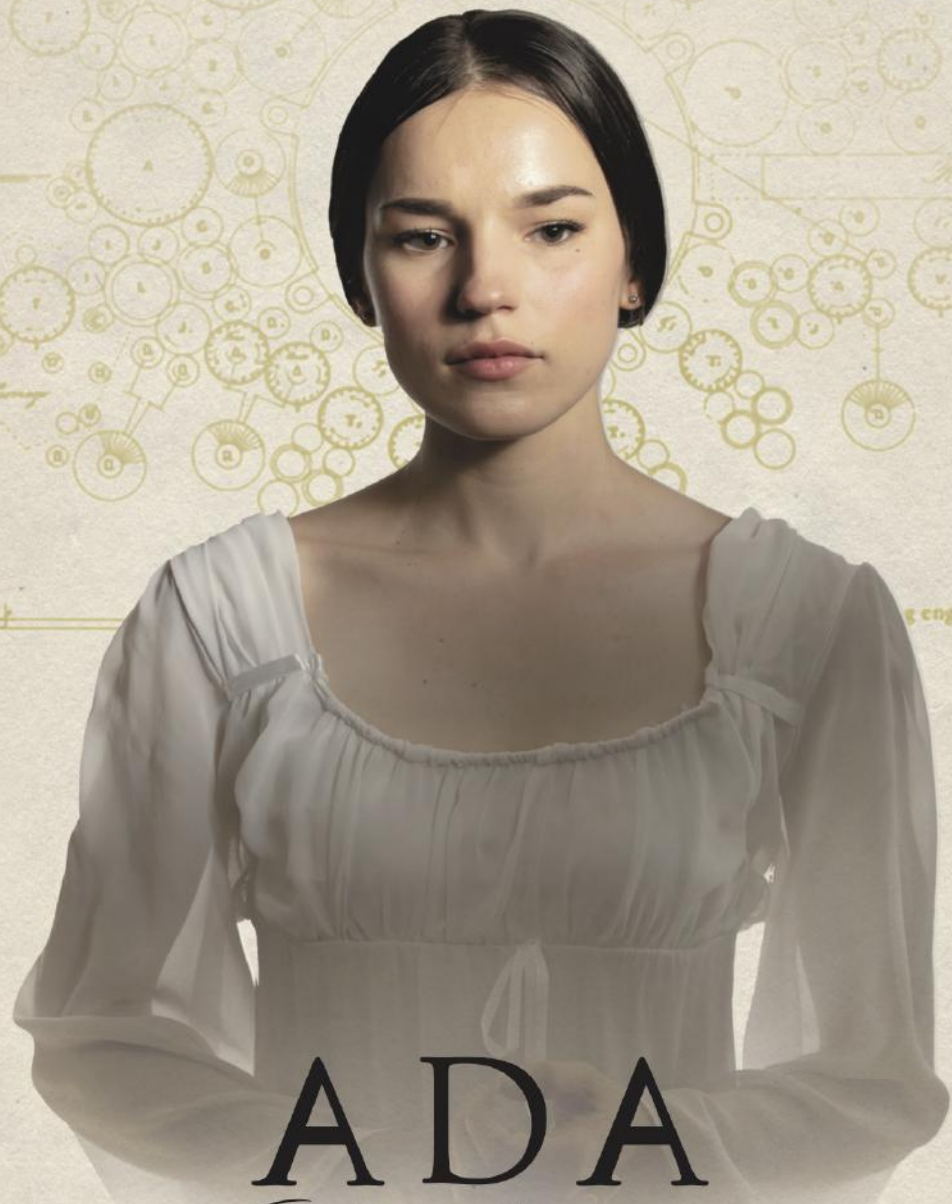
ARTISTIC ASSOCIATES

Susan Arnold
Philip Bennett
Wolfe Bowart

The Scoundrel & Scamp Theatre
738 N. 5th Ave, Suite 131, Tucson, AZ, 85705
Box Office: 520-448-3300 or boxoffice@scoundrelandscamp.org
Director: director@scoundrelandscamp.org
Find us on Facebook & Instagram
Website: scoundrelandscamp.org

FEB 10 2022 FEB 27

"That brain of mine is something more than merely mortal; as time will show."
- Ada Byron Lovelace



ADA and the *Engine*

BY LAUREN GUNDERSON

A Play of Love and Scandal
at the Dawn of the
Technological Revolution

SEASON FIVE
THE
**SCOUNDREL
& SCAMP**
THEATRE

**A PLAY FOR SCAMPS &
SCOUNDRELS**
Ages 12+